

Cheshire West & Chester Council  
Adult Education



# Learner Handbook



Adult Education  
Cheshire West and Chester



Cheshire West  
and Chester



## COVID-19

We follow all Government guidelines and take the safety of our learners and staff extremely seriously. We have therefore extended course risk assessments in order to take account of any potential risks associated with the pandemic. If you are attending a course in person in one of our centres, your tutor will inform you of any specific arrangements in place for that venue.

It is essential if you are attending a course in person that:

if you develop symptoms of COVID-19 or you test positive for the virus, you **do not** physically attend a learning venue. You must inform your tutor immediately so that they can advise others as appropriate

if you need to self-isolate you must inform your tutor as soon as possible

- you provide up-to-date contact details, and contact details for your next of kin, should you need to be contacted by the Government's Track and Trace team

# Welcome to Adult Education – Cheshire West and Chester

We are delighted you have enrolled on one of our Adult Education courses and we hope you will get a lot of personal benefit from participating and achieving your learning goals with us.

All our staff are committed to providing you with high quality teaching, interesting classes and any support you might need to ensure your time with us is productive and enjoyable.

All our programmes are designed to help you progress. Many of you will be looking to move into employment or progress in work so once your course is over, we will work with you on the next steps in your journey, whether that is to further learning, voluntary work or employment.

Adult Education - Cheshire West and Chester offers so many opportunities to realise your potential and fulfil your goals and all our staff will support you to make the right choices for your future.

**We hope you enjoy your course and wish you every success.**

**Happy learning!**

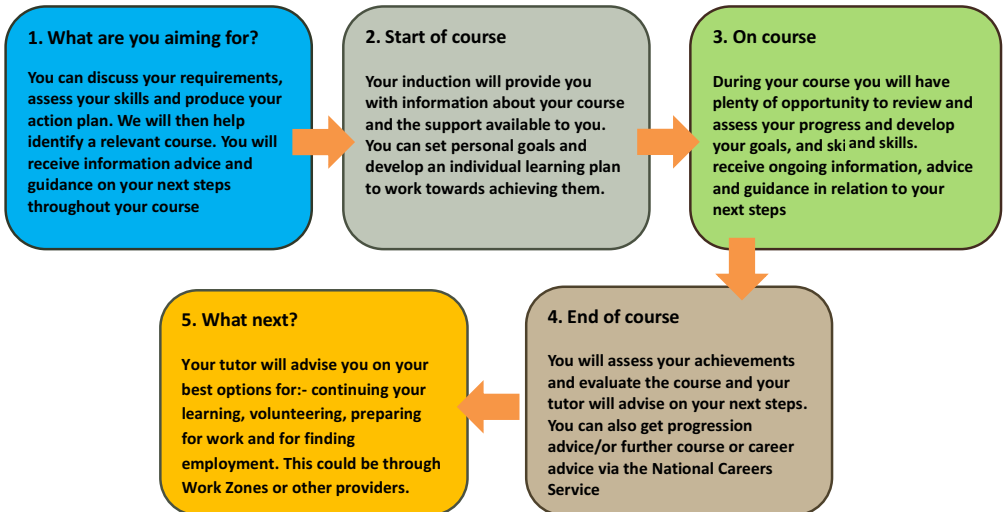
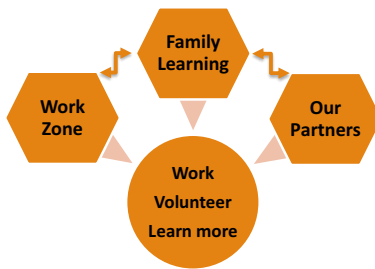


A handwritten signature in black ink that reads "Clare Latham". The signature is fluid and cursive.

**Clare Latham**

Skills and Employment Manager

# Skills and Employment Learner Journey



# Learner Code of Conduct – what we expect from you

**When you become our learner we expect that you:**

- follow ground rules set at the start of the course
- take ownership of your learning by getting actively involved
- attend sessions regularly and punctually
- inform the appropriate member of staff as soon as possible if you are unable to attend a session
- inform your tutor/staff members about any special requirements/support you have/need
- seek help when you need it and take advantage of the support offered
- use our facilities and resources responsibly
- behave respectfully to others and adhere to the Adult Education Cheshire West and Chester policies and procedures
- give us feedback to help us to improve our courses and services



# Learner Charter – our commitment to you

**Cheshire West and Chester Council's Adult Education Team aims to give you:**

- a service that is polite, professional and respectful of diversity in all its forms
- support to help you progress towards your career aim
- high quality Information Advice and Guidance
- an assessment of your current skill levels and advice on how to develop them further
- a choice of courses that meet your needs
- an induction to your course
- high quality of teaching, resources and support
- help to enable you to take responsibility for managing your own learning
- regular and constructive feedback on your progress
- the opportunity to feedback to us to help us improve our service
- opportunities in every course to develop your essential transferable skills



# Our commitment to your Health and Wellbeing

**We aim to create an environment that promotes your mental health and wellbeing.**

**This means that as a Service our tutors will:**

- create an open and inclusive classroom environment which encourages an understanding for those with mental ill health
- promote equality of opportunity and challenge mental health stigma through curriculum teaching and wider support programmes
- undertake relevant mental health training so that they can offer the best possible support for all their learners
- signpost to external support services, where appropriate
- promote the benefits of the NHS 'five ways to wellbeing' to mental wellbeing.

# Health and Wellbeing

Mental health and stress-related problems face a growing number of people.

Evidence suggests there are 5 steps you can take to improve your mental health and wellbeing. These steps could help you feel more positive and able to get the most out of life. During course induction, your tutor will also provide you with a '5 ways to wellbeing' handout.

## Connect

Connect with people around you – with family, friends, colleagues, neighbours and local communities.

Good relationships are important for your mental wellbeing

They can:

- help you to build a sense of belonging and self-worth
- give you an opportunity to share positive experiences
- provide emotional support and allow you to support others

## Be Active

Walk, dance, exercise, but remember, good quality sleep is every bit as important to wellbeing as being active.

Evidence shows that being active can improve your mental wellbeing by:

- raising your self-esteem
- helping you to set goals or challenges and achieve them
- causing chemical changes in your brain which can help to positively change your mood

## Give

Give your time by doing something nice for a friend or stranger. Give someone a compliment. Join a group and contribute.

Research suggests that acts of giving and kindness can help improve your mental wellbeing by:

- creating positive feelings and a sense of reward
- giving you a feeling of purpose and self-worth
- helping you connect with other people

## Take Notice

Paying more attention to the present moment can improve your mental wellbeing. This includes: your thoughts and feelings, your body and the world around you.

Here are a few ideas:

- Go for walks and take notice of the sunset, sunrise, trees, birds, gardens and the changing seasons.
- Visit new places
- Take notice of how people around you feel and act

## Keep Learning

Try something new. Learning new things will help you feel more confident as well as being fun.

Learning new skills can:

- boost self-confidence and raise self-esteem
- help you to build a sense of purpose
- help you to connect with others

For more information visit: <https://www.nhs.uk/mental-health/self-help/guides-tools-and-activities/five-steps-to-mental-wellbeing/>



## Transferable skills and Attributes

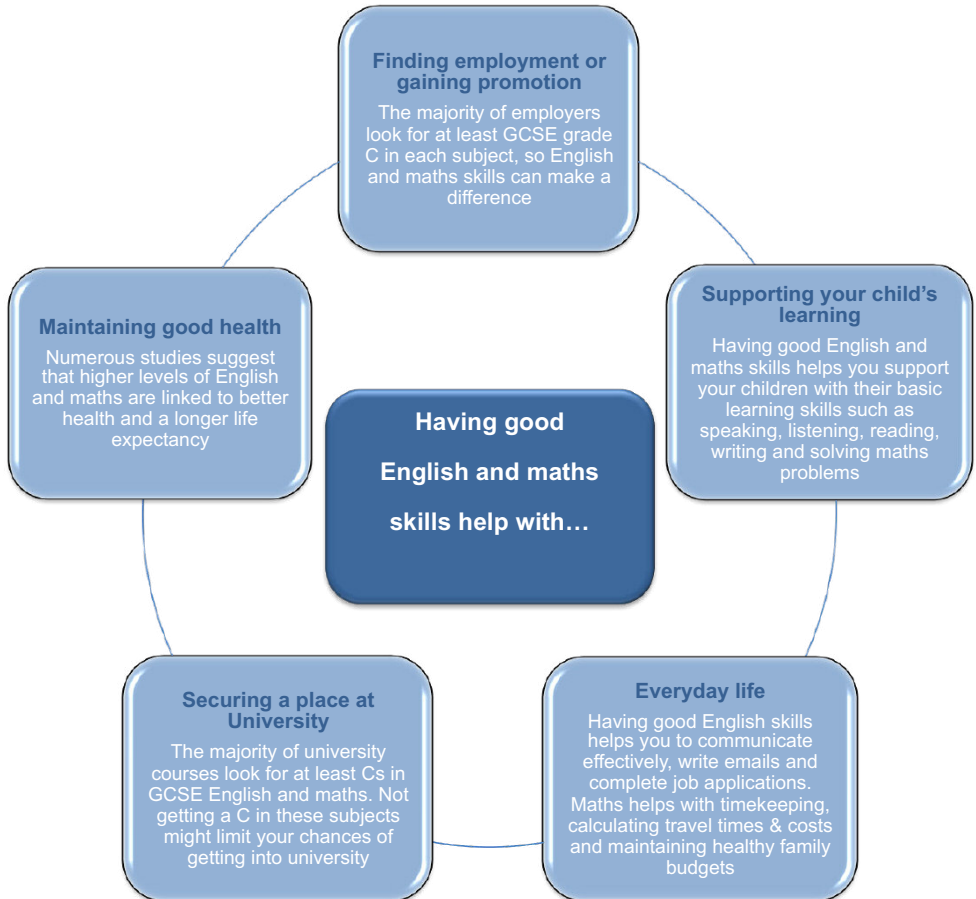
During the course, you will also develop many of the following essential transferable skills/Attributes that are applicable in your everyday life, education or at work, such as:

Essential Transferable Skills	Meaning
<b>Listening</b>	Receiving, retaining and processing of information or ideas
<b>Speaking</b>	Oral transmission of information or ideas
<b>Problem Solving</b>	The ability to find a solution to a situation or challenge
<b>Creativity</b>	The use of imagination and the generation of new ideas
<b>Staying Positive</b>	The ability to use tactics and strategies to overcome setbacks and achieve goals
<b>Aiming High</b>	The ability to set clear, tangible goals and devise a robust route to achieving them
<b>Leadership</b>	Supporting, encouraging and developing others to achieve a shared goal
<b>Teamwork</b>	Working cooperatively with others towards achieving a shared goal
Attributes	Meaning
<b>Resilience</b>	The capacity to recover quickly from difficulties and toughness
<b>Confidence</b>	The quality of being certain of your abilities or of having trust in people, plans, or the future
<b>Independence</b>	Being able to do things for yourself and make your own decisions, without help or influence from other people
<b>Tolerance</b>	Willingness to accept behaviour and beliefs that are different from your own, although you might not agree with or approve of them



# English and Maths

## Why are English and Maths Skills so Important?



## Information Advice and Guidance and Careers Education

We want to support you in identifying courses that meet your specific requirements currently. We also want to enable you to identify appropriate information to support your own progress into further learning and/or employment.

With this in mind, we offer free and impartial Information, Advice and Guidance (IAG) to all of our learners through a number of different ways. These may include:

- pre-course information online, or in leaflets and poster form
- on-course information delivered by tutors or IAG qualified advisors
- discussions with tutors, mentors or other members of staff
- leaflets and posters displayed in learning venues, or provided by tutors
- referrals for one to one appointments with a qualified IAG advisor/mentor
- signposting to specialist organisations for specific support
- partnerships with JCP and other organisations
- National Careers Service (NCS)

For further personal IAG support we recommend NCS

<https://nationalcareers.service.gov.uk/> or call 0800 100900.

## Learning support

If you have a learning difficulty or disability, please inform your tutor. The tutor will assess your needs and provide appropriate adaptations, so you can fully benefit from your course.

## Blended Learning and the Virtual Learning Environment

We now offer many courses online and through blended learning. Blended learning means that part of your course is delivered online or through our Virtual Learning Environment (VLE).

In order to use the VLE, you will need access to the Internet ideally through a laptop, but a tablet or smart phone could be used. Your tutor will provide you with the information you need to access the course and will offer guidance on how to use the system.

## Working Safely Online

This document provides a summary of the key principles of working safely online.

Avoid sharing or exchanging any personal information while using the Internet and/or Virtual Learning Environments (VLE)

The use of chat rooms and live messaging may be part of the course delivery. These will be monitored by tutors. It is important that you only use these to post appropriate content that is relevant to the course. You should reject any unwanted requests for contact from learners outside of the class environment. Block friend/access requests from anyone you don't know.

Secure passwords are important. They should be something that others can't guess. Secure passwords include numbers, and symbols, upper and lowercase characters. Don't use the same password for every site and change them regularly. Never tell anyone your password.

When using CW&C computers and throughout your course, you must not attempt to access, download or upload on the Internet, information that is obscene, sexually explicit, racist or defamatory, incites or depicts violence, accessed to cause distress to others or describes techniques for criminal or terrorist acts.

Images, music, videos, and screensavers from the internet often have a copyright attached. Don't copy or use these files unless you have the creator's permission and you are confident it won't infringe the copyright.

Offensive or abusive language will not be tolerated during online teaching sessions, in group messages or online chats. If you post messages, the system will show who posted them. Learners must not pass messages off as being from another person.

At the end of your session make sure you log out of the programmes and computer. This will avoid other users accessing your desktop and private data.

During online learning sessions you must not make any recordings or screen shots. If you would like to capture some content, please tell the tutor who will arrange this.

When online it is good practice to blur your screen background. This will minimise distraction and increase your privacy. If you need help, your tutor will show you how to do this.

Throughout your course, you must not post anything online that contains:

- Any offensive, obscene, harmful, threatening, abusive, harassing, slanderous, hate inciting, racist or criminal content.
- Anything that causes embarrassment to Cheshire West and Chester Council, its customers, clients or members.
- Personal data about another person including names, contact details and sensitive personal data e.g. about another user's mental or physical health, racial or ethnic origin, religious or other beliefs.

For full details about online safety please read the Online Safety Policy and the Cyber Bullying Policy documents, which your tutor will share with you.

## Online Session Protocol

The following guidelines will help you get the most out of your online session and stay safe whilst online.

### Get ready for your session

- Make your study station ready
- Position your camera to show you against a blank wall or use the background option as you enter the teams lobby to 'blur' the background or choose a backdrop. Watch a video on how to change your background
- Tell anyone else you live with that you are in a meeting. This will help you to stay focused and will stop unwanted interruptions. Make sure that no other family members are in view

### During the session

- Switch your camera on so that the tutor can see who is attending
- Discuss any concerns with your tutor at the start of the session, for example, if you have young children you are looking after
- Follow the class rules your tutor sets
- Remember, this is a learning session and to get the most out of it you need to commit to the session time, concentrate, follow instructions, participate in activities and limit interruptions from other members of your household
- When the tutor and peers are talking, 'Mute' your microphone to stop background noise being picked up which can put other people off
- Inform the tutor on 'Chat' if you need to 'dip out'
- Treat all others in the meeting respectfully; don't interrupt or talk over the tutor or other learners – use the 'Raise hand' icon when you want to speak
- DO NOT record sessions, take pictures or use screens shots

## At the end of the session

- Leave the meeting when your tutor informs the group that the session has ended
- Close or switch off your camera if you are continuing to use your device
- If you have any concerns about the safety of your learning or want to report something, you can contact your tutor, or a Designated Safeguarding Officer

For further information, watch a short 6 minute video about online safety: 'Digital Literacy Staying Safe Online'

<https://www.youtube.com/watch?app=desktop&v=EyQeUwqCDWg>



## Attendance, Punctuality and Absence

You are expected to attend every planned session as absences and late arrivals can have a negative impact on not only your own progress, but also that of your peers.

Whilst we recognise that very occasionally there may be circumstances beyond your control, we do require you to contact your tutor or learning establishment to inform them of an expected absence. Please be aware that tutors must follow-up any unauthorised absences.

## How We Use Your Personal Information

Your personal data and learner files are kept for as long as is necessary to fulfil the purposes we collected it for, as required by law. Your personal data may be used to process or to support any application made for funding associated with your learning. For these purposes we will share the information you supply with the Education and Skills Funding Agency in England.

Your information may also be shared with third parties for education, training, employment and well-being related purposes, including for research. This will only take place where the law allows it and the sharing is in compliance with the General Data Protection Regulation.

At the point this information is collected you will be asked to indicate if you do not wish to be contacted by the Education and Skills Funding Agency or its partners in respect of courses, surveys and research.

Further information about the use of, and access to your personal data, and details of organisations with whom we regularly share data are available at:

<https://www.gov.uk/government/publications/esfa-privacy-notice>



## Comments, Suggestions and Complaints

We value the opinions of our learners and we welcome any comments or suggestions you may wish to make. We always want to hear when things go well, but on occasions, we may get things wrong. If we do, we want to hear from you about this too so that we can work together to put the matter right to stop it from happening again.

Your tutor will inform you of the different ways that you can provide feedback or make a complaint.

## Course Evaluations and Feedback

During your course, usually towards the end, your tutor will ask you to provide feedback on your learning experience. This process is extremely valuable to us and helps us know what went well and what we need to do to improve.

In addition to this, you may be contacted after you have completed your course via email, telephone or post in order to find out what you have progressed onto, and if your course was of any significant value to you.

## Safeguarding including Prevent

We want all our learners to feel comfortable talking to members of staff about issues that are troubling them and our approaches to safeguarding are explained at induction. If you feel that you or someone you know is being abused, you can talk to a member of staff who will pass the information on to the designated Safeguarding officer. Abuse can include physical, emotional, financial, sexual, institutional, discriminatory or bullying (including cyber bullying).

## Prevent

Under the Prevent duty, all tutors have a statutory obligation to promote our British Values. These include:

- Democracy
- Rule of law
- Individual liberty
- Mutual tolerance for those of different faiths and beliefs

In upholding these values within our service, we have a duty to take action and report any activity that could contravene and oppose these values through extremist views and/or actions. Extremism can include:

- Right wing extremism
- Religious extremism
- Animal rights extremism
- Other forms of extremism

Your tutor will discuss British Values and Prevent during the course induction and will demonstrate and promote these throughout the course. If you have any concerns relating to Prevent, speak to your tutor immediately or report your concerns to the Police confidentiality line on 0800 789 321.

## Harassment and Bullying

The Skills and Employment Team is committed to ensuring that all our learners and staff are valued and treated fairly and with respect. If you feel that you or your peers have experienced sexual, racial and other forms of personal harassment and bullying, please contact your tutor or the Safeguarding Officer.

## Equality and Diversity

Our aim is to actively promote equality and diversity and tackle bullying and discrimination so that all learners and potential learners have equal and fair access to our services.

We are committed to eliminating unlawful or unfair discrimination on the grounds of the nine protected characteristics:

- age
- disability
- gender reassignment
- marriage and civil partnership
- pregnancy and maternity
- race
- race
- religion or belief
- sexual orientation

The Skills and Employment Team is required to carry out reviews of their services in relation to the nine protected characteristics as mentioned above.

If you experience or observe discrimination or unfair treatment please tell your tutor or another member of staff.

## Health, Safety and Security

As far as is reasonably practicable, we will ensure that learning takes place in safe, healthy and supportive environments, which meet the needs of the learner. It is the responsibility of all staff and learners to ensure that safe working practices are adopted.

Your tutor will inform you of the fire evacuation procedures, and the location of the assembly point. Please note that learners are responsible for their own personal property and equipment whilst at their learning establishment.

If you see anything that might cause harm to your own and/or others health, safety and security, or if an incident/accident occurs, please report this immediately to your tutor or member of staff. In the case of an injury, the designated first aider will be contacted and the appropriate help sought.

## Local and National Support Services

Here are more national and local support services that may be useful

### **Citizens Advice**

#### **Ellesmere Port**

1 Whitby Road, Ellesmere Port CH65 8AA.

#### **Chester**

Bluecoat Building, Upper Northgate Street,  
Chester CH1 4EE.

#### **Northwich**

Meadow Court, Meadow Street,  
Northwich CW9 5FP.

#### **Winsford**

Wyvern House, The Drumber,  
Winsford CW7 1AH.

### **National Domestic Violence**

National service for women experiencing domestic violence

24-hour Freephone Helpline: 0808 2000 247

<http://www.nationaldomesticviolencehelpline.org.uk/>

#### **Cheshire West and Chester Domestic abuse**

Emergency Duty Team (out of hours): 01244 977277.

Website:

<https://www.cheshirewestandchester.gov.uk/residents/crime-prevention/domestic-abuse/domestic-abuse.aspx>

### **Mental Health Support**

The following charities provide information and support for anyone with mental health problems or learning disabilities

#### **Mind**

Phone: 0300 123 3393

Email: [info@mind.org.uk](mailto:info@mind.org.uk)

Website: <https://www.mind.org.uk/>

#### **Samaritans**

Phone: 116 123 (free 24-hour helpline)

Website: [www.samaritans.org.uk](http://www.samaritans.org.uk)

#### **Mental Health Foundation**

Website: <https://www.mentalhealth.org.uk/>

### **Parenting**

#### **Family Lives**

Provides advice on all aspects of parenting, including dealing with bullying

Phone: 0808 800 2222 (Monday to Friday, 9am to 9pm and Saturday to Sunday, 10am to 3pm)

Website: [www.familylives.org.uk](http://www.familylives.org.uk)

### **Learning disabilities**

#### **Mencap**

UK charity for people with a learning disability

Phone: 0808 808 1111 (Monday to Friday, 9am to 5pm)

Website: [www.mencap.org.uk](http://www.mencap.org.uk)

### **Benefit and money advice**

#### **The Money Advice Service**

For support with money worries.

Phone: 0800 138 7777

Email: [enquiries@moneyadviceservice.org.uk](mailto:enquiries@moneyadviceservice.org.uk)

Website: [www.moneyadviceservice.org.uk/en](http://www.moneyadviceservice.org.uk/en)

#### **Benefit**

##### **Local support**

Phone: 0300 123 7021

Email: [benefits@cheshirewestandchester.gov.uk](mailto:benefits@cheshirewestandchester.gov.uk)

Website: <https://www.gov.uk/browse/benefits>

**Alzheimer's Society**

Provides information on dementia, including factsheets and helplines.

Phone: 0300 222 1122 (Monday to Friday, 9am to 5pm and 10am to 4pm on weekends)

Website: [www.alzheimers.org.uk](http://www.alzheimers.org.uk)

**Addiction (drugs, alcohol, gambling)****Alcoholics Anonymous**

Helps chronic alcoholics to overcome their addiction to alcohol

Phone: 0845 769 7555 (24-hour helpline)

Website: [www.alcoholics-anonymous.org.uk](http://www.alcoholics-anonymous.org.uk)

**Abuse (child, sexual, domestic violence)  
NSPCC**

Children's charity dedicated to ending child abuse and child cruelty.

Phone: 0800 1111 for Child line for children (24-hour helpline)

0808 800 5000 for adults concerned about a child (24-hour helpline)

Website: [www.nspcc.org.uk](http://www.nspcc.org.uk)

**Jobcentre Plus enquiries**

<https://www.gov.uk/contact-jobcentre-plus>

**LGBT Foundation**

A national charity delivering a wide range of services to lesbian, gay, bisexual and trans LGBT communities.

Phone: 0345 3 30 30 30

E-mail: [info@lgbt.foundation](mailto:info@lgbt.foundation)

Website: <http://lgbt.foundation/>

**NHS West Cheshire Clinical Commissioning Group**

Responsible for GP services and other health and care services for the people of West Cheshire.

Website: <https://www.westcheshireccg.nhs.uk/>

# Useful Contacts

## Adult Education Cheshire West and Chester

Clare Latham - Skills and Employment Manager and Designated Safeguarding Officer (adults)

07775 672269

[clare.latham@cheshirewestandchester.gov.uk](mailto:clare.latham@cheshirewestandchester.gov.uk)

Monica McDermott – Senior Officer, Curriculum, Quality and Progression and Deputy Designated Safeguarding Officer (children)

07801 809487

[monica.mcdermott@cheshirewestandchester.gov.uk](mailto:monica.mcdermott@cheshirewestandchester.gov.uk)

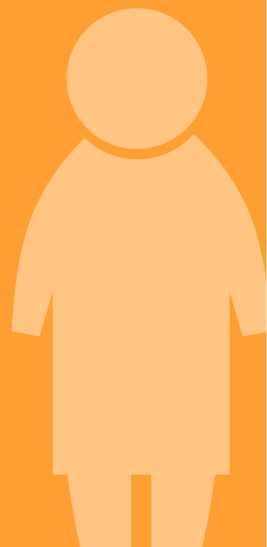
## Cheshire West and Chester Work Zones

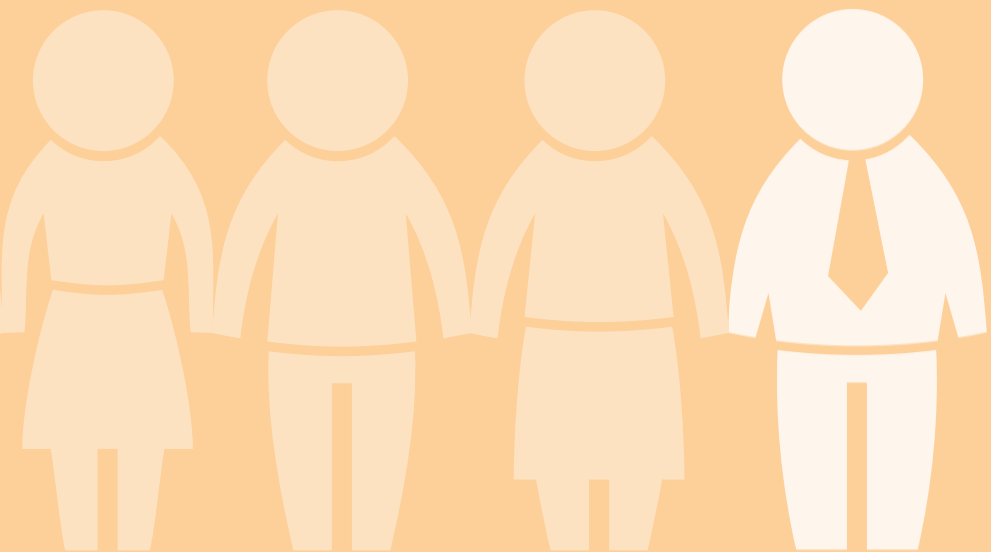
Chester – 01244 976028

Winsford – 01606 288901

Northwich – 01606 288540

Ellesmere Port – 0151 3566667





## Accessing Cheshire West and Chester Council information and services

Council information is also available in Audio, Braille, Large Print or other formats. If you would like a copy in a different format, in another language or require a BSL interpreter, please email us at [equalities@cheshirewestandchester.gov.uk](mailto:equalities@cheshirewestandchester.gov.uk)

إذا أردت المعلومات بلغة أخرى أو بطريقة أخرى، نرجو أن تطلب ذلك منا.

যদি আপনি এই ডকুমেন্ট অন্য ভাষায় বা ফরমেটে চান, তাহলে দয়া করে আমাদেরকে বলুন।

Pokud byste požadovali informace v jiném jazyce nebo formátu, kontaktujte nás

Jeżeli chcieliby Państwo uzyskać informacje w innym języku lub w innym formacie, prosimy dać nam znać.

ਜੇ ਚਿਹ ਜਾਣਕਾਰੀ ਭੁਗਾਨੂੰ ਵਿਸੇ ਹੋਰ ਭਾਸ਼ਾ ਵਿਚ ਜਾਂ ਵਿਸੇ ਹੋਰ ਰੂਪ ਵਿਚ ਚਾਹੀਦੀ, ਤਾਂ ਚਿਹ ਸਾਥੋਂ ਮੰਗ ਲਓ।

如欲索取以另一語文印製或另一格式製作的資料，請與我們聯絡。

Türkçe bilgi almak istiyorsanız, bize başvurabilirsiniz.

اگر آپ کو معلومات کسی دیگر زبان یا دیگر شکل میں درکار ہوں تو برائے مہربانی ہم سے پوچھئے۔

**Tel:** 0300 123 8 123 **Textphone:** 18001 01606 867 670

**email:** [equalities@cheshirewestandchester.gov.uk](mailto:equalities@cheshirewestandchester.gov.uk)

**web:** [www.cheshirewestandchester.gov.uk](http://www.cheshirewestandchester.gov.uk)